

## **Installation and lamp change instructions for SDL - 12V Draw Light.**

### **Safety Information**

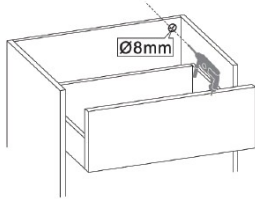
Please read these instructions carefully before installing this product and store in a safe place in case of future reference. If you are unsure on the fitting of this product we recommend that you consult a qualified electrician. Install on a smooth flat surface. This fitting is IP20 rated, must keep away from steam and water splashing. When the LED's expire the fitting must be replaced.

### **Tool Required**

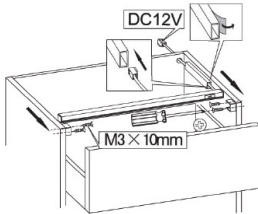
Power Drill - PZ1 Screw Bit - 8mm Drill Bit - Pencil

### **Installation:**

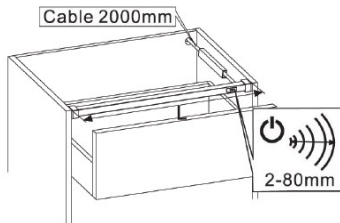
1. Drill a hole in the back of the drawer for the cable to pass through.



2. Fix the provided mounting brackets to either side of the drawer carcass, making sure that they are aligned.



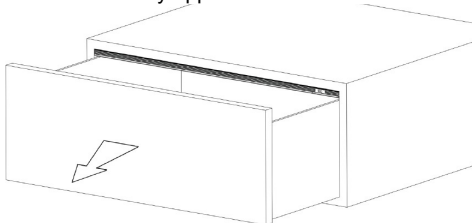
3. Feed the 2m cable on the fitting through the cable channel and the hole drilled in the back of the drawer in step one. Pull the cable through and secure the cable channel to the drawer carcass by removing the strip on the 3M adhesive.



4. Plug the white cable from the end of the cable into the connector block from the 12V driver. Make sure that you do not exceed the wattage of the driver. The max wattage of the driver will be listed on the driver. The wattage of the fitting will be listed on the back.
5. Wire the 12V driver into 240V mains supply or a 13A plug.

### **Operation**

Once fixed the light is activated as the drawer is opened. The IR sensor on the front of the fitting detects the drawer has been opened (the detection range is 2-80mm) and will switch the light on. The light will switch off as the drawer closes. A 30 second delay applies



Not for general waste. Please contact your local authority on how to dispose correctly.